



TURKISH  
PHILANTHROPY  
FUNDS

# TPF TÜRKİYE EARTHQUAKE FUND

1st ANNIVERSARY IMPACT REPORT





# THANK YOU

Our journey in responding to the earthquake crisis was ignited by an extraordinary act of generosity from Hamdi Ulukaya, who not only donated \$1 million but also pledged an equal amount in matching funds. This powerful lead set a precedent of giving, inspiring Eren and Fatih Özmen to join with their own \$1 million donation, further extended by a \$1 million in matching pledge. These initial acts of kindness created a ripple effect, turning our earthquake campaign into an extraordinary success story. We express our deepest gratitude to Hamdi Ulukaya, Eren Özmen and Fatih Özmen.

The impact of these initial donations was amplified by the collective spirit of over 120,000 individuals. Inspired by the generosity of Ulukaya, the Özmen's, and our incredible community of donors, we have witnessed a powerful wave of giving. This united effort has profoundly impacted the lives of those affected by the earthquake, embodying the essence of community spirit and warmth. We remain eternally grateful for your contributions.

“Like so many of you, our hearts ache deeply for Türkiye and those impacted by the devastating Earthquake in 2023. Fatih and I were moved and inspired by the incredible network of donors from across the globe that came together to help those in need. TPF worked quickly to identify and meet immediate critical needs, and now is continuing important work in the region to rebuild cities, communities, and lives. As we pass the one-year mark since the earthquakes, much has already happened, but the full road to recovery will be a long one. Thank you TPF for your tireless work to support ongoing relief efforts in so many ways, and for making a significant, tangible difference in the lives of those impacted by the earthquake.”

Eren Özmen



“In the wake of the devastating earthquake that struck Türkiye early in 2023, a tragedy that took the lives of our brothers and sisters and injured countless, we knew the path to recovery and rebuilding would be long and difficult. It also would not have been possible without the sustained support from the global business community. Turkish Philanthropy Funds led with compassion and delivered much needed lifesaving supplies in those critical hours after the earthquake and stayed with the people as they began to rebuild their lives bringing hope. This response embodies the leadership vision of Haldun Tashman when he founded TPF. To all who have reached out with helping hands, your support has not just provided aid; it has given us strength, resilience, and a path towards healing.”

Hamdi Ulukaya



Dear Donors, Partners, and Friends,

As we mark the first anniversary of the devastating earthquake that shook Southeast Türkiye, I am filled with a profound sense of gratitude and reflection. This report is not just a summary of what we have achieved together; it is a testament to the resilience, compassion, and solidarity that define our community.

A year ago, we were faced with an unprecedented challenge. The earthquake left indelible scars, both on the land and in the hearts of those affected. In response, TPF mobilized swiftly, channeling the outpouring of support into effective action. Thanks to your unwavering commitment, we have been able to make significant strides in healing, rebuilding, and planning for a future that is not only resilient but also thriving.

This report highlights the journey we have undertaken together. From the initial phase of emergency response, where we collaborated with over 70 partner organizations and disbursed \$10.5 million in grants, impacting over 1.7 million people, to the development of a long-term strategy that addresses the evolving needs of the region. We have strived to ensure that our efforts are not just about rebuilding, but about nurturing communities and revitalizing hope.

As we look back at the year gone by, we are reminded of the power of collective action. Our achievements are a reflection of your generosity and trust in our mission. We have seen firsthand how, even in the darkest of times, humanity

shines brightest. This report is as much yours as it is ours – a story of what we can accomplish when we come together for a common cause.

As we move forward, our focus remains steadfast on empowering those affected by the earthquake. We are committed to transforming the affected areas into hubs of growth and prosperity. Our goal is to see these communities not just survive but thrive, becoming vibrant, self-sustaining entities full of life and energy.

On behalf of everyone at TPF, I extend my deepest gratitude for your support. Your partnership in this journey has been invaluable. Together, we have laid the foundation for a more resilient future, and I am confident that, with continued support, we will achieve even greater milestones in the years to come.

Thank you for standing with us.

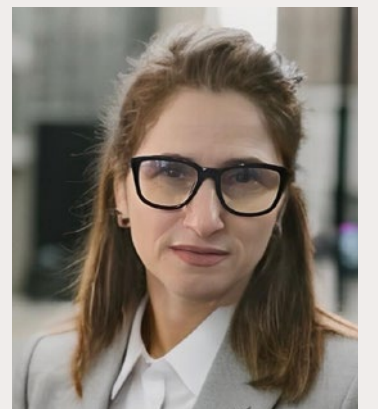
Gratefully,

*Şenay Ataselim Yilmaz*

**Şenay Ataselim Yilmaz, Ph.D**

Executive Director

On behalf of Turkish Philanthropy Funds

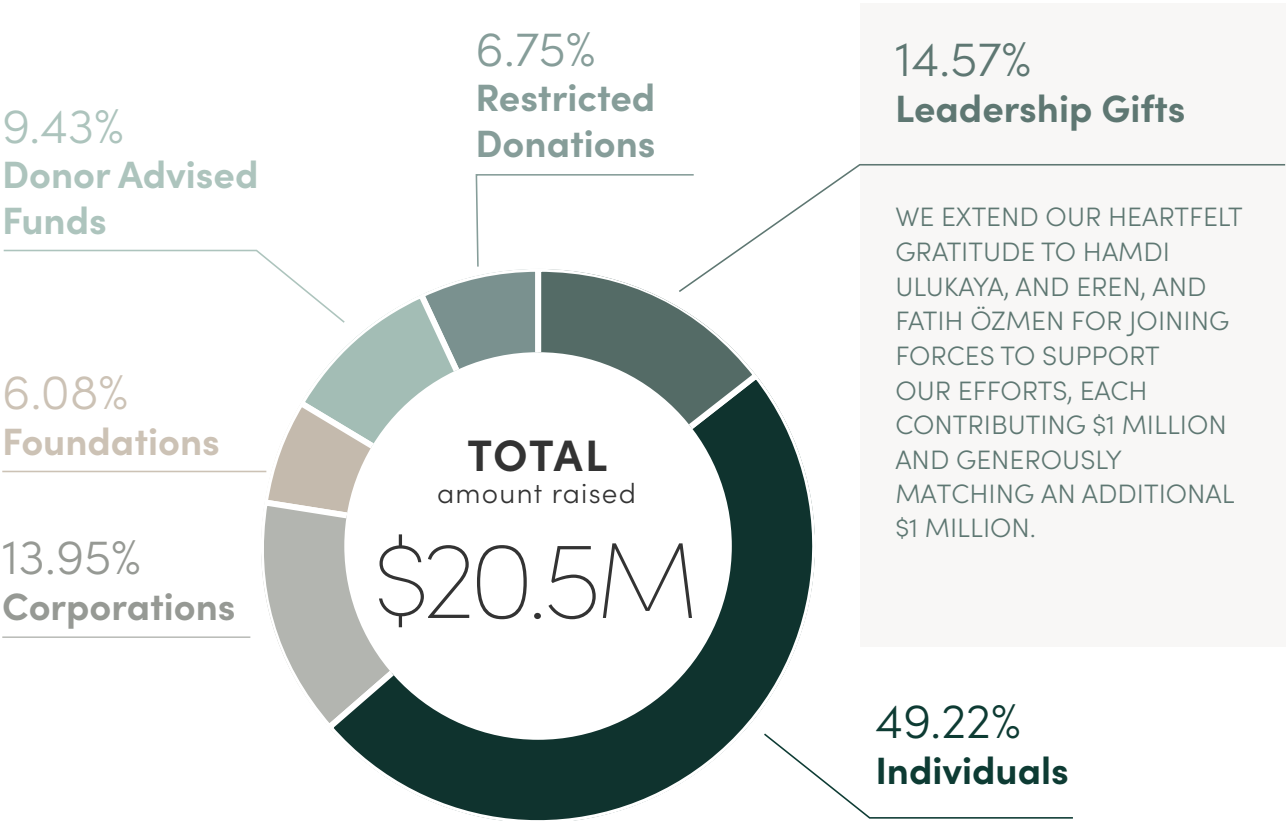


**Şenay Ataselim Yilmaz, Ph.D**  
EXECUTIVE DIRECTOR



# TPF'S RESPONSE

We are immensely grateful for the outstanding support from our community, which enabled us to respond swiftly to the earthquake. Moments after initiating our fundraising campaign, donations began pouring in, significantly impacting our ability to provide grants to organizations on the ground within the same day. Your support has been crucial, and we extend our heartfelt thanks to each and every one of you!



\$14.4 MILLION  
GRANTED



# TPF TURKIYE EARTHQUAKE FUND

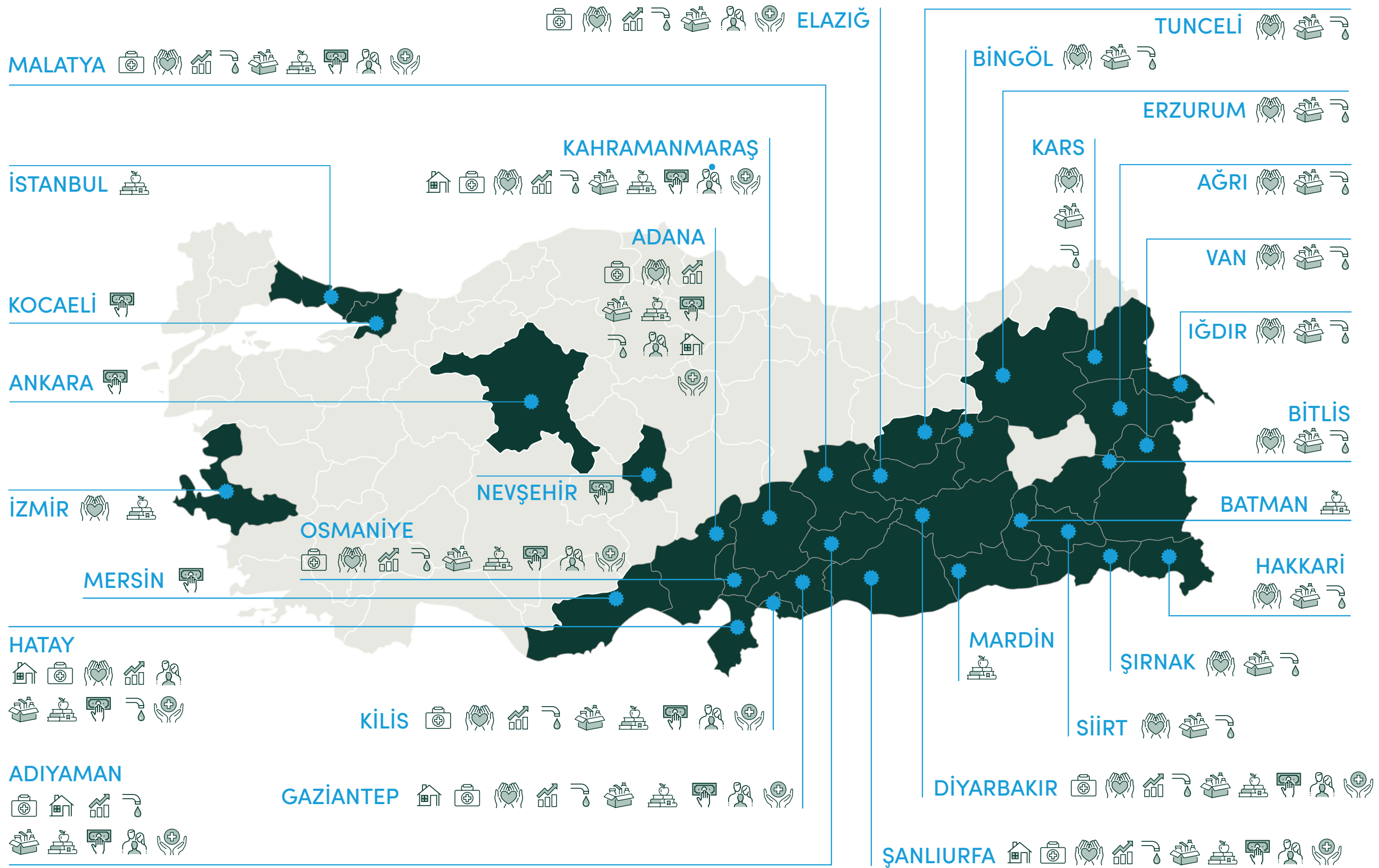
GRANT IMPACT

100% of donations  
go directly to NGOs working  
on the ground in Türkiye.

1.7M+  
people  
supported

\$14.4M  
granted

72  
NGOs  
supported



**HEALTH SERVICES** 18.91%

**EMERGENCY SHELTER & HOUSING** 6.61%

**PSYCHISOCIAL & MENTAL HEALTH** 11.35%

**ECONOMIC DEVELOPMENT** 10.22%

**SAFE SPACES FOR CHILDREN** 13.04%

**WASH** 5.99%

**FOOD SECURITY & NUTRITION** 6.46%

**EDUCATIONAL SUPPORT** 22.20%

**HUMANITARIAN CASH ASSISTANCE** 3.81%

**SEARCH & RESCUE OPERATIONS** 1.41%



# TPF’S RESPONSE

ORGANIZATION <small>(divided by area of support)</small>	ACTIVITY	LOCATION	AMOUNT
Economic Development			
Innovation for Development (I4D)	The “Sosyal Zincir” Project created a digital interface to connect local and rural producers and the private and public sectors, bridging the gap between buyers to respond to urgent demand and supply in the region. The amount supports 300 local and rural producers to access new markets and customers and sell their on-hand products.	11 cities affected by the earthquake	\$71,000
AÇEV	To cover one year of professional expenses of a fellow from Esas Sosyal’s First Chance Program 2023.	Istanbul	\$10,000
MAYA Foundation	To cover one year of professional expenses of a fellow from Esas Sosyal’s First Chance Program 2023.	Istanbul	\$10,000
KAGİDER	To establish “Community Centers” to provide secure joint working spaces in the disaster-impacted areas.	Hatay, Kahramanmaraş, Adıyaman, Malatya, Gaziantep	\$120,000
Needs Map	To support 15 women from the earthquake region through the production activities of two cooperatives.	Ankara and Mersin	98,300
Baksi Culture and Arts Foundation	Provided income and employment opportunities for women affected by the earthquake in the production workshop to be opened in Bayburt.	Bayburt	50,000
Unvansız Gönüllüler Association	To enhance employment prospects in the earthquake-affected area by transforming soup kitchens, which have been central in relief efforts, into centers of economic activity and development.	Hatay	99,600
Buradayız Hatay Association	To support small businesses in Hatay, thereby creating new employment opportunities in the earthquake region.	Hatay	45,925
Educational Support			
ÇYDD	Provided immediate scholarship assistance to 1,000 students and their families.	11 cities affected by the earthquake	\$53,000
PAYDA	Supported PAYDA scholarship recipients and their families in the region. From the grant, 15 university students were transferred out of impacted cities, accommodations for 20 students, housing of a family who lost their homes for two months, and cash assistance to 243 students for five months.	Malatya, Mardin, Batman, Adana, Diyarbakır, Kahramanmaraş, Hatay	\$81,795
KAHEV	Provided scholarship support to 120 students who lost their families and homes.	11 cities affected by the earthquake	\$53,503
TOÇEV	Provided cash assistance, psychological support, monthly food, stationary school needs, and relocation support to families needing relocation for 12 months to 123 families with 343 children who lost their homes due to the earthquake.	Adana, Mersin, Adıyaman, Gaziantep	\$95,940
TEGV	Provided support to TEGV’s two Activity Centers and 7 Firefly Mobile Education Trucks, which helped TEGV’s team provide shelter, nutrition, and hygiene kits to earthquake survivors and psycho-social activities to children, and educational support.	11 cities affected by the earthquake	\$85,000
Lokman Hekim Health Foundation	Provided rental support and computers to 150 medical students from Hatay that had to migrate to Istanbul and Kocaeli.	İstanbul, Hatay, Kocaeli, Antakya, Avcılar, Fatih, Gebze	\$167,486

ORGANIZATION <small>(divided by area of support)</small>	ACTIVITY	LOCATION	AMOUNT
ÇYDD	Supports a min. of 400 female college students with scholarships, laptops, internet, and accommodation support over the next 4-years impacted by the earthquakes.	11 cities affected by the earthquake	\$500,000
TEV	Scholarships to 140 college students studying and/or living in provinces affected by the earthquake.	11 cities affected by the earthquake	\$39,190
Askıda Ne Var?	One-year scholarship to 160 college students who lost their families and/or homes as a result of the earthquakes.	11 cities affected by the earthquake	\$96,000
BALEV	Transfer of 150 students and their families from impacted cities to Boronova, Izmir and cover the student's academic year transportation to school, food, and book costs.	Bornova, Izmir	\$94,896
Cerebral Palsy Türkiye	One year of medical and developmental support for 200 children and newborns with cerebral palsy impacted by the earthquakes.	Istanbul	\$97,512
TOÇEV	Creating a self-help book that helps cope with the trauma of the earthquake and distributing them to organizations providing psychosocial support.	11 cities affected by the earthquake	\$20,250
Çocuklar Gülsün Diye Association	Establishing a preschool in the most needed city in the region.	11 cities affected by the earthquake	\$76,150
Okul Destek Derneği (ODD)	Supporting 5,000+ earthquake-impacted students with a summer school catch-up program.	11 cities affected by the earthquake	\$21,000
Down Türkiye	Providing educational and psychosocial programs (PSS) for people with Down Syndrome and their families.	Hatay and Kahramanmaraş	\$99,980
KORUNCUK	One year of school, dorm, and basic needs expenses of girls transferred from the earthquake region to Koruncuk Villages.	Urla, Izmir and Bolluca, Istanbul	\$50,000
AHBAP	Supports the establishment of a 12-classroom school in the earthquake-hit region.	11 cities affected by the earthquake	\$30,000
Societal Impact Association	Providing 26 elementary and middle school students impacted by the earthquake with scholarships and tablets.	11 cities affected by the earthquake	\$14,337
Societal Impact Association	Providing 300 elementary and middle school students impacted by the earthquake with scholarships and tablets.	11 cities affected by the earthquake	\$165,459
YGA	Providing science kits to underprivileged schools for earthquake-impaired students. The Earthquake Region Science Movement aims to improve affected children's competencies in STEAM (Science, Technology, Engineering, Arts, and Math) while allowing them to develop projects independently. The project aspires to make kids feel safe and secure again, in control, and hopeful for the future. With this grant, the project will aim to reach 400 students per school and 150 schools in total.	11 cities affected by the earthquake	\$120,867
ALİKEV	The grant supports emergency aid scholarships for young people in earthquake-affected areas. The amount will be spent on emergent scholarship aid for 126 students.	11 cities affected by the earthquake	\$33,223
Darüşşafaka Society	The grant will cover the annual education and training expenses of two students whose residence addresses are in the earthquake zone.	Istanbul	\$24,480
Robert College	To cover two current students' education expenses from the earthquake region.	Istanbul	\$45,000

# TPF’S RESPONSE

ORGANIZATION (divided by area of support)	ACTIVITY	LOCATION	AMOUNT
Robert College	To provide furnishing and air conditioning to four classrooms in the earthquake region.	Hatay	\$13,850
BUMED	To provide cash assistance to 100 students for ten months.	11 cities affected by the earthquake	\$50,000
Fusun Sayek Association for the Development of Health and Education	The grant supports establishing a resilient community center to support the crisis-stricken community in its recovery efforts.	Arsuz, Hatay	\$33,223
AHBAP	The support will be used for Ahbap's school project. The project aims to build schools in earthquake-impacted cities, and each school will have 12 classrooms. Building one school costs \$459,378.99. This amount will be added towards the cost of establishing a school.	Hatay	100,000
AKUT Foundation	The grant will be used to provide a project containing a container site incorporating 8 classes, 2 toilets and 2 administration containers. AKUT is planning to have two of these school sites and it will be a multi-purpose school, including elementary, mid school and college. All will operate at different times of the day.	Hatay	112,458.88
AHBAP	The support will be used for Ahbap's school project. The project aims to build schools in earthquake-impacted cities, and each school will have 12 classrooms. Building one school costs \$459,378.99. This amount will be added towards the cost of establishing a school.	Hatay	70,000
Askida Ne Var Association	#AskidaBursVar was launched on February 14th for university students affected by the earthquake. More than 64,000 university students who are affected by the earthquake have applied to the scholarship program (14 February- 1 March). All funds (%100) will be sent to the students directly.	Hatay, Maraş, Antep, Diyarbakır, Adana, Osmaniye, Kilis, Urfa, Adıyaman, Malatya, Elazığ	99,000
KODA	This project targets 70 villages affected by earthquakes by empowering 70 early career teachers who work in those village schools, and their students and students’ parents through them. By doing so, these early career teachers will benefit from one-on-one online mentoring provided by 35 experienced teachers with a minimum of 7 years in the field. The project will also provide all participating teachers with foundational training to support their personal and professional growth in the areas of social and emotional learning (SEL), empowering parenting skills and establishing effective school-family interactions. SEL training will cover essential skills such as self-awareness, self-regulation, communication, social awareness, and responsible decision-making, which are crucial for coping with the traumatic effects of disasters on children, families, and teachers.	11 cities affected by the earthquake	99,998
SEV	The aim of the project is to provide “Post-Disaster Teacher Support Program” to teachers and school administrators from all subjects teaching at K-12 level in private and public schools (priority will be given to the public schools) in the earthquake-affected provinces, as well as from the province of Mersin and Tarsus, which have received considerable migration from the earthquake-affected cities; and to ensure that teachers in the region organize their learning environments in a way that supports children's well-being and that maintains quality education. The end goal is that the teachers who receive the training will help raise awareness about providing a trauma-sensitive school environment and continuing educational activities with consideration of the well-being of children when they return to their own schools and disseminate this perspective/mindset in their own institutions. The camp will also offer training and social activities that will support the well-being of participating teachers.	11 cities affected by the earthquake	54,576

ORGANIZATION (divided by area of support)	ACTIVITY	LOCATION	AMOUNT
Needs Map	The grant will be used to provide the needs for the construction and implementation of Community Centers in Hatay and Kahramanmaras. Community centers have been designed as areas where people come together produce in workshops, cook food, plant products, carry out educational activities, organize film screenings, concerts and talks and more, in other words, people can come together in one center in co-living spaces.	Hatay, Kahramanmaraş	122,533.93
AKUT Foundation	The grant will be used to provide a project containing a container site incorporating 8 classes, 2 toilets and 2 administration containers. AKUT is planning to have two of these school sites and it will be a multi-purpose school, including elementary, mid school and college. All will operate at different times of the day.	Hatay	209,076.27
ÇYDD	This is to support a minimum of 200 college students who are impacted by the earthquakes with scholarships, laptops,Internet, and accommodation support over the next 4-years (throughout their college education).	11 cities affected by the earthquake	7,926.77
TEGV	The Activity Center is designed to offer educational assistance to children in economically challengedareas. This support will be provided by a team of professional coaches, administrators, and dedicated volunteers.	Gaziantep	86,000
Support to Life	To provide school and hygiene bags to 500 children in the earthquake region who are still in need ofschool supplies and hygiene items to keep them healthy. These bags will also be a great help to keep them motivatedand to keep them in school.	Hatay, Kahramanmaraş, Adıyaman, Diyarbakır, Batman, Mardin, Adana, İzmir	26,416
Darüşşafaka Society	The grant will cover the annual education and training expenses of a student whose residence addresses are in the earthquake zone.	Istanbul	5,849.54
Darüşşafaka Society	The grant will cover the annual education and training expenses of a student whose residence addresses are in the earthquake zone.	Istanbul	17,400
TEV	The grant will be used for the Keep Them in School Scholarship Fund, which will provide financial assistance to 22 students from the earthquake region.	11 cities affected by the earthquake	17,400
TOG	The grant will be used for the scholarship program of TOG for 2 years for 10 students affected from the earthquake in Türkiye.	İzmir	8,600
Darüşşafaka Society	The grant will cover the annual boarding of 4 students affected by the earthquake.	Istanbul	13,329.20
Emergency Shelter & Housing			
NEF Foundation	Established 8 containers within the 650 units of container city in Antakya and Kahramanmaras.	Antakya and Kahramanmaraş	\$47,136
Needs Map	One generator provided for the people in cold at Gaziantep Center.	Gaziantep	\$32,000
Federation of Women Associations of Türkiye (TKDF)	The grant supports a rental assistance project which will provide accommodation for those who are impacted by the earthquake. The priority group will be the lowest-income seniors, women-headed households, child-headed households, households headed by people with disabilities, and other at-risk populations.	Ankara, İzmir, Antalya, İstanbul, Mersin and Kocaeli	\$390,000

# TPF’S RESPONSE

ORGANIZATION <small>(divided by area of support)</small>	ACTIVITY	LOCATION	AMOUNT
ARSA	The grant supports temporary housing support for earthquake-affected people in Türkiye. Projects will provide guidance for PSS support, such as giving referrals and accommodation support to those impacted by the earthquake and have suffered from the loss of life, injuries, displacement, or trauma.	Kahramanmaraş, Malatya, Adana and Kayseri	\$390,000
Turkish Cancer Association	Supported the accommodation of 50 patients’ family members that accompanied them during their cancer treatments.	11 cities affected by the earthquake	\$15,000
Unvensız Gönüllüler Association	Provided tents to those employed in agriculture and farming in the villages.	Hatay Villages	\$98,234
Food Security & Nutrition			
Unvensız Gönüllüler Association	Prepared food boxes and organized their disbursement through Afet Platformu warehouses to 17,000 people in difficult-to-reach villages.	Village of Antakya, Village of Kahramanmaraş, Village of Adiyaman	\$98,831
Food Rescue Association	Delivered humanitarian aid to people affected by the earthquakes by coordinating FRA's food bank system, infrastructure, and network and by this, provided 92,000 nutritiously rich canned foods to villages.	Villages of Kahramanmaraş, Hatay, Malatya, Adiyaman, and Şanlıurfa	\$63,560
Manisa ÇÖLYAK	To provide gluten-free boxes to 300 celiac patients for three months.	11 cities affected by the earthquake	\$97,200
Needs Map	Supplied 8,000 food boxes to people in need. These boxes contain rice, chickpeas, beans, pasta, sugar, seasonings, and more. They will then disburse the boxes to identified tent cities and mobile kitchens in need.	Antakya, Adiyaman, Hatay	\$42,232
Manisa ÇÖLYAK	Provided 1,001 gluten-free food boxes to children who are celiac patients in the region or who have moved to neighbor cities.	11 cities affected by the earthquake	\$85,146
World Human Relief (WHR)	Disbursed 1,000 food packages, 1,000 hygiene kits, 300 baby boxes, and 1,000 blankets.	11 cities affected by the earthquake	\$29,201
Food Rescue Association	Established a container kitchen for hot meal production, providing employment opportunities to those in the region.	Kırıkhan, Hatay	\$283,947
Basic Needs Association (TIDER)	Distributed 4,500 food boxes and 4,500 hygiene kits to the affected regions.	11 cities affected by the earthquake	\$100,000
Teachers Academy Foundation (ÖRAV)	Provided 2,000 teachers with educational and training materials and emergency kits which included hygiene materials, power banks, backpacks, hats, thermos, tea, coffee, etc.	Antakya (Hatay), Samandağ (Hatay), İskenderun (Hatay), Kırıkhan (Hatay), Pazarcık (Kahramanmaraş), Dulkadiroğlu (Kahramanmaraş), Onikişubat (Kahramanmaraş), Nurdağı (Gaziantep), İslahiye (Gaziantep), Osmaniye Merkez, Adiyaman Merkez, Gölbaşı (Adiyaman).	\$104,462
AKUT Foundation	Provided 4 weeks food, water, and basic needs to 10,000 people impacted by the earthquakes.	Antakya, Samandağ, Hatay	\$112,459

ORGANIZATION <small>(divided by area of support)</small>	ACTIVITY	LOCATION	AMOUNT
Hope Foundation for Children with Cancer (KAÇUV)	Provided two months of prepaid shopping cards for 271 children and their families under cancer treatment in disaster areas, alllowing families to purchase food and hygienic materials from regional supermarkets.	11 cities affected by the earthquake	\$86,720
NEF Foundation	Increased the capacity of FRA's current kitchen to save food for an additional 3,000 for 30 days.	Villages of Kahramanmaraş, Hatay, Malatya, Adiyaman, and Şanlıurfa.	\$40,627
Kirkayak Culture Arts and Nature Association	The grant supports the Mutfak Project, a collective space where women from local and refugee communities create living practices together.	Gaziantep	\$22,731
Health Services			
Türkiye SMA Foundation	Provided medical devices, food, and hygiene kits to 96 SMA patients and their families living in containers, tents, and other temporary locations in the affected regions.	11 cities affected by the earthquake	\$61,754
Çukurova University Foundation	To establish the Children’s Earthquake Rehabilitation Center to treat 300 amputated children (ages ranging from 0-18) impacted by the earthquakes.	11 cities affected by the earthquake	\$50,000
Çukurova University Foundation	To establish the Children’s Earthquake Rehabilitation Center to treat 500 amputated children (ages ranging from 0-18) impacted by the earthquakes.	11 cities affected by the earthquake	\$26,220
Çukurova University Foundation	To establish the Children’s Earthquake Rehabilitation Center to treat 500 amputated children (ages ranging from 0-18) impacted by the earthquakes.	11 cities affected by the earthquake	\$500,000
LÖSEV	Supported the LOSEV Mobile Earthquake Relief Vehicle, which helps children with leukemia, their families, and adult cancer patients living in the provinces affected by earthquakes with social support services, psychological support, and medical examination to complete their registration process at LÖSANTE Children’s and Adult Hospital.	11 cities affected by the earthquake	\$51,850
Turkish Cancer Association	To provide cash assistance to 70 cancer patients for six months.	Hatay, Adiyaman, Kahramanmaraş, Malatya, Gaziantep, and Şanlıurfa	\$57,200
Turkish Cancer Association	Supports the cancer treatment plans of 100 people affected by the earthquake and transferred to different cities.	Hatay, Adiyaman, Kahramanmaraş, Malatya, Gaziantep, and Şanlıurfa	\$8,140
LÖSEV	Supported the Mobile Kitchen Project serving cancer patients with nutritional food on the campus of Sütçü İmam University in Kahramanmaraş.	Sütçü İmam University in Kahramanmaraş	\$87,060
Justice for Animals	The grant supported animal rescue, rehabilitation and medical treatment, rehoming, animal welfare and training for animals in earthquake impacted regions.	Antakya, Antalya, and Kahramanmaraş	\$19,234
Needs Map	Supports establishing and equipping a field hospital with a 20–bed capacity in the Erzin district of Hatay.	Erzin, Hatay	\$488,340
TOHUM Autism Foundation	Provides education & technology support to 500 children with autism.	11 cities affected by the earthquake	\$98,569



# TPF’S RESPONSE

ORGANIZATION <small>(divided by area of support)</small>	ACTIVITY	LOCATION	AMOUNT
KAÇUV	The initiative is focused on supporting families with children battling cancer by offering financial supportspecifically for the children's food and hygiene needs.	11 cities affected by the earthquake	100,000
Justice for Animals	The grant will be used to solve the problem of uncontrolled growth in the cat population by conducting a city-wide sterilization program for the cats living in the three largest districts of Hatay, namely Samandag, Defne and Antakya. It aims to trap, spay, and neuter a total of 150 cats, with 50 cats from each district under clinical conditions provided by the vets that Dort Ayakli Sehir collaborates in Istanbul, and finally, rehome them.	Hatay	5,849.54
Füsun Sayek Association for the Development of Health and Education	The grant will be used to build two water purification systems in Defne and Arsuz in Hatay to provide a reliable source of clean and drinkable water for the community in Hatay, Türkiye.	Hatay	5,849.54
Unicef USA	The grant will be used for the relief and recovery efforts in Syria and Türkiye, where UNICEF teams are on the ground providing support to vulnerable children and families. Funds will be put towards the Humanitarian Action for Children (HAC) Appeals in both Syria and Türkiye, addressing the most pressing needs in both countries.	Aleppo and 11 cities affected by the earthquake	7,500
STDV	The grant will be used for a grant program, which aims to empower community-based organizations working in the earthquake-affected regions addressing urgent environmental issues, and the threat to biodiversity, ecosystem services, agricultural productivity, water resources, waste management, and marine and coastal land protection. The goal of the program is to address urgent challenges in Hatay, Adana, and Mersin and to restore coastal and marine landscapes and foster sustainable food systems, to mitigate the environmental impact of the devastating earthquakes of February 2023.	11 cities affected by the earthquake	20,000
Humanitarian Cash Assistance			
ARSA	Provided two months of rent and shopping cards from chain markets for 330 displaced people, asylum seekers, refugees, and families in earthquake-hit areas.	Kahramanmaraş, Gaziantep, Malatya, Adiyaman, Adana and Şanlıurfa	\$75,405
YUVA Association	Provide cash assistance to 200 children and their families impacted by the earthquakes for 11 months.	11 cities affected by the earthquake	\$75,900
Antakya Civilization Choir Foundation	Supported 200 musicians in purchasing their lost costumes and instruments as well as the purchase of a sound system for the choir and their venue.	Antakya	\$100,000
Turkish Cancer Association	Provided \$200 cash assistance to 80 cancer patients in need of medicine for their treatment.	11 cities affected by the earthquake	\$16,000
Bolu Community Foundation	To provide rent support for 30 families from the earthquake region.	Bolu	\$92,329
LÖSEV	To provide six months of cash assistance and in-kind support to seven families from the earthquake region with cancer and leukemia patients.	Ankara	\$95,999
Turkish Education Association (TED)	Will provide 15 students, classes K-12 level, who are now orphaned students affected by the earthquake with educational and physiological support for one year.	11 cities affected by the earthquake	\$105,000

ORGANIZATION <small>(divided by area of support)</small>	ACTIVITY	LOCATION	AMOUNT
Psychosocial & Mental Health			
MAYA Foundation	Supports three teams providing services in various provinces in coordination with other nonprofits working on the ground to provide psychological support integrated with art therapy as an emergency response in triage for children and adults affected by earthquakes.	Şanlıurfa, Hatay, Kahramanmaraş	\$53,427
Turkish Psychological Association	Establishment of a support center in Gaziantep where volunteer psychologists with adult and children specializations can provide psychosocial services to earthquake-affected people, focusing on İslahiye, the most damaged district in the city.	İslahiye and Nurdağı in Gaziantep	\$96,620
SPoD	The grant will support the LGBTI+ community in the aftermath of the earthquakes via psychological and peer counseling.	Istanbul and other cities	\$17,486
Nirengi Association	Building and furnishing of the Individual & Group Counseling and Safe Space for Children Activity Center, which aims to enhance the resilience of its participants by strengthening their psychological well-being. It will also provide legal assistance to people who have lost their relatives or whose homes have been destroyed/damaged without needing to travel elsewhere.	Hatay or Kahramanmaraş	\$99,950
Turkish Family Health and Planning Foundation (TAPV)	Supports women and girls against an increased risk of reproductive health-related issues and gender-based violence while providing psychosocial support activities and distributing of 300 maternity kits for pregnant and postpartum women, 300 dignity kits, and 100 school sets to girls.	Adana	\$94,435
TEGV	Establishment of activity centers for children in container cities in the earthquake region.	11 cities affected by the earthquake	\$85,000
Young Lives Foundation	Providing PSS and training programs for earthquake survivor children temporarily housed in Izmir and schooling.	Urla and Torbalı in Izmir	\$99,985
Change Leaders Association	To provide a trauma-informed leadership program for 150 university women.	11 cities affected by the earthquake	\$47,976
The Psychiatric Association of Türkiye	Will support the purchase of a mobile mental health services caravan and provide shelter to PAT healthcare workers.	11 cities affected by the earthquake	\$113,090
The Smile & Olive Foundation (Basmeh Zeitooneh)	The grant will support a safe space for women and offer psychosocial-oriented services to marginalized women.	Idleb, Syria	\$24,480
MAYA Foundation	In a two-year period, access to mental health and protection services and programs will be provided to people in or transferred from earthquake-affected areas. In this process, Maya Vakfi Foundation plans to provide acute period interventions in the first weeks/months and acute and mid-term mental health services with mobile teams to be established in the regions through six months. In the second six months, it plans to increase the psychological resilience of people and to meet the long-term psychological support services. From acute to middle phase, in the six months, it is planned to deliver mid-term psychosocial support services through the mobile team based in Hatay. Mid-term interventions: 1. Art-based psychosocial support works (ProjectLift), 2. Psychological recovery skills sessions, 3. Parenting sessions 4. Capacity Building Trainings and 5. it covers service mapping studies for access to long-term services.	Hatay	99,307

# TPF’S RESPONSE

ORGANIZATION (divided by area of support)	ACTIVITY	LOCATION	AMOUNT
MAYA Foundation	The grant will be used in its efforts to increase emergency response capacity of Maya Foundation to invest in and strengthen its communication, fundraising, grants, and finance functions. In a two-year period, access to mental health and protection services will be provided to survivors in the earthquake-affected areas or migration received metropolitans. In the medium term, Maya Foundation will increase its emergency response capacity in the quake affected region as much as it increases the funding/grants, and interventions to be financed will mainly include: Group and individual therapy sessions (especially in non-camp areas focusing on psychological recovery skills), individual protection assistance, caregiver sessions on trauma informed approach and capacity building trainings on trauma informed mental health and protection services for the institutions (I/NGOs, government agencies, etc.) and people (especially MHPSS professionals) on the ground.	Hatay, Urfa, Adiyaman	36,750.20
SPoD	The grant will be used to sustain and expand the psychosocial support programme of the Social Policy, Gender Identity, and Sexual Orientation Studies Association (SPoD) by hiring a social work expert to provide inclusive and quality psychosocial support services to LGBTI+ individuals, especially those affected by recent earthquakes.	Istanbul and other cities	5,849.54
Safe Spaces for Children			
Suna’nın Kızları	Established a Children’s Community Center for girls ages 11-18, providing safe spaces, peer support groups, and therapeutic support.	Pazarcık, Kahramanmaraş	\$161,000
Federation of Women Associations of Türkiye (TKDF)	Established a “mor yerleske” (Purple Women and Children Safe Space), creating safe spaces for women and girls in container and tent cities. The color purple was selected so women and girls could easily find these spaces.	11 cities affected by the earthquake	\$60,000
Buradayız Hatay Association	Hosted a Children's Day (April 23rd) event, which hosted 600 people, including families, and was created for preschool and elementary school students (4-11 years old) to support kids to return to their everyday lives with fun activities and workshops..	Hatay	\$23,711
AÇEV	Provided early childhood development play boxes to children and their families impacted by the earthquakes.	Adiyaman, Nurdagi (in Gaziantep), Defne (in Hatay)	\$100,540
KORUNCUK	Providing safe housing in KoruncukKöy facilities in İstanbul and İzmir and cover the immediate needs of 100 girls impacted by the earthquakes.	Urla, İzmir and Bolluca, İstanbul	\$81,000
TEGV	Repairing of a FireFly Mobile Education Vehicle to be placed in earthquake-impacted cities alongside the additional FireFly Mobiles.	11 cities affected by the earthquake	\$91,000
Sinemasal Art & Culture Association	Establisng a Sinemasal Campus providing kids living in tents and container cities with workshops and outdoor activities.	Samandağ, Hatay	\$89,364
BIDEV	Building a Basket Villages, which offer shelter, hygiene facilities, and basketball courts, aimed at helping kids to cope with the disruptions caused by the disaster and facilitate socialization with their peers.	Belen, Hatay	\$120,319
TEGV	Their goal in this project is to contribute to the lives of 500 children in the earthquake zone by providing them with bicycles. With the training, they will teach children the parts of a bicycle, carrying the bicycle, the issues to be considered for safe riding and what to do in case of an emergency. The target group they provide bicycles to is children between the ages of 6-14 living in container cities.	Hatay	85,100

ORGANIZATION (divided by area of support)	ACTIVITY	LOCATION	AMOUNT
Federation of Women Associations of Türkiye (TKDF)	This fund will be used to establish one Purple Women and Children Safe Space to create safe spaces for women and girls in container and tent cities. The color purple was specifically chosen so women and girls can easily find these spaces when they need to. The space will have three separate areas: one child-friendly space, one nursing space, and one prime healthcare service space to create a holistic support mechanism for survivors to offer a sense of community and connection, helping women and girls to feel less isolated and vulnerable.	Adiyaman	60,000
Search & Rescue Operations			
Needs Map	Supported coordination, needs analysis, and humanitarian aid.	11 cities affected by the earthquake	\$100,000
Community Volunteers Foundation (TOG)	Provided temporary relief and emergency supplies for displaced families.	11 cities affected by the earthquake	\$100,000
White Helmets	To support the core operating costs of The White Helmets emergency response, specifically for rent, utilities, supplies, fuel, spare parts and light equipment, salaries, stipends, etc.)	Aleppo	7,500
WASH (water, sanitation, and hygiene)			
AKUT Foundation	Established a barber and hair salon container facility providing free services for earthquake-impacted individuals.	Hatay	\$100,000
Support to Life	Provided water for wash facilities laundry rooms, and supported the disbursing of hygiene kits and non-perishable needs, and provided shelter.	Şanlıurfa, Diyarbakır, Hatay, and Adana.	\$100,000
KAMER Foundation	Providing humanitarian aid in the region.	Hatay, Kahramanmaraş, Gaziantep, Şanlıurfa, Kilis, Adiyaman, Diyarbakır	\$93,500
World Human Relief (WHR)	Distribution of 1,000 food packages, 1,000 hygiene kits, 300 baby boxes, and 1,000 blankets.	11 cities affected by the earthquake	\$40,840
Needs Map	Providing drinking water.	Hatay	\$149,060
KAMER Foundation	Establishing laundromats and shower cabins in Adiyaman, providing women and girls with a secure and welcoming environment as well as 2,000 hygiene kits and 2,000 food packages.	Hatay, Kahramanmaraş, Adana, Osmaniye, Gaziantep, Kilis, Adiyaman, Malatya, Urfa, Diyarbakır, Elazığ, Mardin, Kızıltepe, Şırnak, Ağrı, Batman, Bingöl, Bitlis, Erzurum, Hakkâri, Iğdır, Kars, Siirt, Tunceli and Van	\$100,000
65+ Elder Rights Association	To establish container toilets and bathrooms for elderly and disabled individuals in Hatay.	Hatay	\$52,127
Community Volunteers Foundation (TOG)	Supplied 100 thermal tents, 100 sleeping bags, and 500 hygiene kits to individuals in earthquake-affected cities.	11 cities affected by the earthquake	\$88,050
AKUT Foundation	To establish a barber and hair salon container facility providing free services for earthquake-impacted individuals.	Hatay	\$120,000



# TPF’S RESPONSE

ORGANIZATION <small>(divided by area of support)</small>	ACTIVITY	LOCATION	AMOUNT
Long Term Funds			
Çukurova University Foundation	Children Wellness Center project aims to provide orthoses and prostheses for new patients, replacement or adaptation of prostheses for those who have outgrown their current devices, psychological therapy sessions and educational support to ensure their continued development and integration into society.	11 cities affected by the earthquake	\$840,000
Suna'nin Kizlari	The project aims to leverage the SK's Children's Hubs in Antakya and build the capacity of public organizations by implementing community-based interventions, empowering girls as agents of change, monitoring the ecosystem through a digital map, and strengthening governmental and non-governmental capacity on girl-centered design in the reconstruction and recovery process. capacity on girl-centered design in the reconstruction and rehabilitation process.	Hatay	\$934,268
Community Volunteers Foundation (TOG)	The project aims to provide young people who are students in a city affected by the earthquake, or who will experience the trauma caused by the earthquake for many years, with a place to socialize, information about their rights, hobby and vocational courses, entrepreneurship workshops to ensure their social recovery, psychological support through the employment of a psychologist at the Youth Center.	Hatay	\$890,837
Needs Map	The project aims to understand the needs and challenges of local economic actors at the sectoral level, and to reach out to those affected by the earthquake who have equipment and training needs for business continuity.	11 cities affected by the earthquake	\$999,830





# TPF'S GRANTMAKING APPROACH AND STRATEGY

## POST-FEBRUARY 6TH EARTHQUAKES

In the wake of the February 6th earthquakes, TPF swiftly implemented a grantmaking strategy that was more than an immediate reaction; it was a comprehensive plan for empowering the affected communities.

Our grants to-date-have been made with the following objectives:

Our commitment to **local empowerment** was at the forefront, as we actively engaged with and listened to the voices of disaster-affected communities and organizations serving on the front lines. This ensured that our recovery efforts were not only effective but also sustainable, with the active involvement of those most affected.

**Equity** has always been a guiding principle for us, and in these challenging times, we prioritized organizations that champion equal opportunities, especially for marginalized and at-risk populations. Our aim was clear: to ensure that the benefits of recovery reached every individual, leaving no one behind.

We recognized the pivotal role played by our non-profit partners on the ground in the recovery process. To this end, we provided essential funds for **capacity building** to enhance their human, technical, and infrastructural resources, enabling them to deliver programs and services more effectively. By minimizing administrative burdens and prioritizing

transparency throughout the process, we aimed to create a more efficient and effective support system.

TPF always believed in the power of **collaboration**. We partnered with local NGOs and other funders to ensure that resources were allocated efficiently and community needs were met without duplication of efforts.

Regular site visits, partner reports, and impact evaluations allowed us to foster relationships based on trust and respect, ensuring **effective resource utilization** and making a meaningful difference in the lives of those affected by the earthquake.

Our grantmaking strategy, underpinned by compassion, transparency, and collaboration, has not only empowered communities but also set the stage for their lasting recovery.

As we continue to make grants, we've developed a comprehensive long-term strategy to continue addressing the needs in the region. Recognizing that true recovery demands ongoing support and long-term solutions, the TPF Earthquake Fund is structured to provide support in three distinct ways:

### 1. Continued Grant Provision

Our current earthquake fund will continue providing grants up to **\$50,000**, and is now open to non-TPF partners. Our goal is to continue assisting NGOs in the region that are dedicated to helping earthquake

survivors in areas that may not have received full recognition during our needs analysis. We have allocated **a total of \$1 million** for this purpose.

### 2. Enhancing Resilience

To effectively address the long-term impacts of earthquakes in Türkiye, we are dedicating **\$1 million** towards enhancing the resilience of both the non-profit sector and the wider community. Our focus is on supporting projects that improve disaster preparedness and prevention, ensuring a proactive approach and a stronger response to such natural disasters.

### 3. Long-Term Funding through Invitation-Only Grants

The remaining funds will be allocated via an invitation-only process. This focused approach ensures efficient and impactful fund use, fosters strong partnerships, and increases the likelihood of successful, sustainable outcomes.

Going forward, our mission is not just about rebuilding; it's about transforming post-earthquake areas into thriving communities. This is envisioned in two phases: first, nurturing and maintaining new living spaces to positively affect residents' well-being; second, catalyzing these spaces into engines of urban renewal and economic growth. Our goal is to see these communities not only survive but thrive, becoming vibrant, self-sustaining entities full of life and energy.





# EMPOWERING VOICES

## Kadriye’s Journey of Community Leadership and Women’s Health Advocacy

GRANTEE ORGANIZATION	TURKISH FAMILY HEALTH AND PLANNING FOUNDATION (TAPV)
Project Details	Supporting women and girls in the face of increasing risks related to reproductive health and gender-based violence. Efforts include providing psychosocial support activities, and the distribution of essential kits: 300 maternity kits for pregnant and postpartum women, 300 dignity kits, and 100 educational sets for girls, to meet their specific needs during these challenging times.
Project Objective	Empowering women and girls, ensuring they have access to necessary health care, protection, and support, thereby enhancing their quality of life and resilience in the face of adversity.
Grant Amount	\$94,434.55



Kadriye, a high school graduate and mother of three from Adana, exemplifies the power of self-education and community leadership. Despite traditional norms, she embraced the role of “Mahalle Annesi” (Neighborhood Mother), connecting with her community to address and solve local issues. Her journey took an inspiring turn when she learned about a local women’s meeting organized by TPF Partner, TAPV (Turkish Family Health and Planning Foundation), aimed at empowering women.

Curiosity and a strong will to learn led her to attend this meeting, overcoming cultural barriers and objections from her social circle, including her mother-in-law. What she learned there about women’s health, rights, and reproductive health was transformative, propelling her to not only continue attending but also to encourage others to join.

Kadriye’s dedication significantly expanded the project’s reach. She persuaded her close friends to join her for the next meeting. Two weeks later, Kadriye went door-to-door alongside project coordinators, educating women on vital issues. This project in Adana, which became a refuge for many survivors in the region, was a TAPV initiative focused on educating women about reproductive health and responding to the rise in gender-based violence.

Aware of the rising issues of reproductive health and gender-based violence in the region, TAPV created a project in Adana, one of the 11 cities impacted by the earthquake. Their goal was to educate women about their bodies and reproductive health, and they were determined to reach as many women and girls as possible. Through their efforts, Kadriye and many other women had access to birth control supplies, dignity kits, and maternity kits for pregnant and postpartum women.

TAPV’s work provided women access to essential health supplies like birth control, dignity kits, and maternity kits. More than healthcare, this project sparked crucial conversations on gender-based violence and in traditionally taboo subjects, empowering women to understand and assert their rights.

Kadriye’s story, and the impact of such initiatives, underscores the importance of ensuring healthcare and awareness of women rights in the earthquake region. Thanks to your support, women in these areas are gaining control over their bodies and their rights, opening new doors to knowledge and empowerment.

# A TEACHER’S RESILIENCE IN THE WAKE OF THE EARTHQUAKE

GRANTEE ORGANIZATION	YOUNG GURU ACADEMY (YGA)
Project Details	Providing science kits to schools in areas affected by earthquakes, particularly focusing on underprivileged students. Its goal is to enhance children’s abilities in STEAM fields (Science, Technology, Engineering, Arts, and Math). By engaging them in independent project development, the initiative not only fosters educational growth but also aims to restore a sense of safety, control, and optimism about the future in these young minds. Through this grant, the project is set to impact approximately 400 students in each participating school, reaching a total of 150 schools. This outreach signifies a significant step in rebuilding confidence and skills among children in earthquake-impacted regions.
Project Objective	Combining educational development with emotional and psychological healing, using STEAM education as a tool for both learning and recovery.
Grant Amount	\$120,867

Ebru is an English teacher from Elbistan, Kahramanmaraş, which was the epicenter of the earthquake in February. The district was shaken by a 7.5 magnitude earthquake, and the majority of the village collapsed into dust. On that day, she not only lost her home, which was severely damaged, but also many relatives, friends, and students from her school.

Although she had the option to be appointed as a teacher in another city and start fresh, Ebru chose to stay for her students, or, in her terms, her children. Staying behind required immense courage and numerous therapy sessions to come to terms with her losses. While the surrounding buildings were in ruins, Ebru stood strong. She was determined to heal herself first and then her children.

In a landscape filled with ruins, Ebru’s school miraculously stood without damage. It transformed into a home for over 2,000 children, well beyond its capacity of 650, providing them a haven

of normalcy amidst the chaos. Heartbroken by the devastating stories of her students – some were rescued from the rubble after four days – Ebru searched for something to hold on to for her children. YGA’s program on youth development was exactly what she was looking for.

Ebru’s connection with YGA became a source of solace and support. Previously, she had participated in YGA’s teacher workshop and remained in contact with their network. After the earthquake, YGA was actively seeking schools in need in the region, and Ebru seized this opportunity. A team of YGA volunteers journeyed from Istanbul to Elbistan, bringing science kits that offered more than just educational materials – they brought moments of joy and distraction to the children in Ebru’s school.

These science workshops became a turning point for many children. Hamit, who had not spoken a word since losing his mother during the earthquake, spoke for the first time when coding an automated



car with YGA volunteers. Adopted by his aunt after losing both parents in the earthquake, Efe had sparkles in his eyes as he built a truck with bits and pieces he picked up from the garbage bin for the first time since February. Kerem played with Legos for the first time in his life during YGA’s science workshop and now dreams of becoming an engineer to build real cars.

This story is a tribute to educators like Ebru, who selflessly dedicate themselves to the well-being of their students. It highlights the power of resilience, the impact of compassionate teaching, and the transformative effect of community support. Ebru’s story, and the support provided by organizations like YGA and TPF, underscore the profound difference we can make in the lives of those who have faced great adversity.



# RESILIENCE IN RUINS: THE UNYIELDING SPIRIT OF HATAY

GRANTEE ORGANIZATION	BURADAYIZ HATAY ASSOCIATION
Project Details	Hosted a special event for Children’s Day on April 23rd, attended by 600 participants including families. This celebration was designed especially for preschool and elementary school children aged 4 to 11 years. The festival was a hub of creativity and fun, featuring a variety of activities and workshops. Attendees had the opportunity to engage in movement, arts, music, and drama workshops, offering a stimulating and enjoyable experience for the young learners.
Project Objective	Project has multi-faceted objectives: Fostering Creativity and Learning; Enhancing Social Skills; Promoting Cultural Awareness; and creating a memorable, joyful experience for children and their families, fostering a sense of community and happiness.
Grant Amount	\$23,711.10



Hatay is one of the top three cities most impacted by the disaster that hit Southeast Türkiye on February 6th, 2023. That day changed the lives of millions, as the majority of the city collapsed into dust, leaving inhabitants without shelter, essential needs to exist in dignity, and jobs. While many displaced residents sought refuge in other cities with relatives, some remained, either constrained by financial limitations or a lack of external support networks.

In the midst of this desolation, a group emerged. They are the ones who could have left but chose to stay. Their goal was not just to help their neighbors but to heal the wounds inflicted by the disaster and bring back their hometown to its past glory days. This group, the remarkable team of Buradayız Hatay (‘We Are Here, Hatay’), represents the epitome of resilience in the city.

Formed by locals who personally endured the earthquake’s impact, Buradayız Hatay was born out of shared loss – loss of family, homes, and a sense of normalcy. Despite the overwhelming destruction, this team committed to rebuilding their city. Experiencing the needs firsthand, they accurately identified critical areas for assistance, including safe spaces, job opportunities, education, psychosocial support, and childcare. They established a grassroots organization, quickly becoming a powerful force for good, initiating impactful projects to support the remaining

residents of Hatay. Their efforts, proudly supported by TPF, exemplify the enduring spirit and commitment to a hopeful future in the region.

A highlight of Buradayız Hatay’s initiatives was a two-day celebration for the disaster-affected children and their families. This event aimed to provide a much-needed break from their hardships, allowing them to momentarily forget their sorrows. Those two days were unique in the region, as, for the first time in months, children took the stage and enjoyed simply being children despite the loss and destruction they experienced way beyond their age. Music, balloons, face painting, volunteer clowns, and snacks brought smiles back to their faces, even if it was in a tent in the middle of rubble. Simple things we take for granted brought so much joy and hope for children in Hatay that it was contagious. One celebration brought together not just children but the whole community, reminding everyone of their enduring strength

The journey ahead for Hatay is one of collective rebuilding and healing. Together, the city’s residents are determined to revive their community, overcome the despair, and rewrite their narrative from a day of tragedy to one of unbreakable resilience. As part of this journey, we at TPF, along with your support, stand committed to aiding Buradayız Hatay and the earthquake survivors in turning this chapter of heartbreak into a testament of recovery and hope.



# HOW CAN YOU FILL IN FOUR WALLS OF A CONTAINER?



GRANTEE ORGANIZATION	SUNA’NIN KIZLARI – SUNA AND INAN KIRAC FOUNDATION
Project Details	With the funds, a Children’s Hub was established in a container city in Maraş to address the specific needs of girls aged 11-18. This hub provides: <ul style="list-style-type: none"><li>• Sessions of well-being and conversations (get-togethers) for children aged 11-18.</li><li>• Programs for all children in cooperation with Suna’nın Kızları NGO participants.</li><li>• Individual psychological support through licensed adolescent and child therapists.</li><li>• Semi-structured socializing times, such as movie screenings, reading hours, publishing, creative writing, social media, arts, and sports workshops.</li><li>• Meetings and sessions with immediate caregivers like mothers or close women relatives.</li></ul>
Project Objective	The project aims to empower girls as agents of change, build the capacity of public organizations through implementing community-based interventions, and strengthening the governmental and non-governmental capacity on girl-centered design in the rebuilding and recovery process.
Grant Amount	\$161,000

Imagine a place where you can find joy as you socialize with your peers, share your opinions and needs, lead the conversation, shape the activities you would like to participate in, escape the crowded living areas you had to settle in, and relax in a quiet place, making friends... Now, imagine that you can be a part of this place when you need it the most. That’s what Suna’nın Kızları miraculously managed to fit within four walls of a container in Pazarcık, Hatay.

With one big idea in mind—the wellness of the whole individual—Suna’nın Kızları established its first community hub in the earthquake region with your generosity to TPF’s Earthquake Fund. The hub stands out as the first of its kind – girls centered – in both the earthquake region and Türkiye and is dedicated to supporting girls aged 12-18, a group often overlooked in disaster recovery efforts.

Initially planned for Sanliurfa, after a year of intense research, Suna’nın Kızları shifted their focus to Pazarcık, Hatay after the earthquake, recognizing the urgent needs and vulnerabilities of

young girls in this area. Their research identified the region as particularly at risk for issues like early child marriages and school dropouts among teenagers. Since they already had plans to empower young girls and build an ecosystem to support them in Southeast Türkiye, Suna’nın Kızları was able to act fast. The hub offers a healing and empowering space for girls. Always keeping girls at the center, Suna’nın Kızları tailors the hub’s activities to the evolving needs of its participants through surveys. Activities range from journalism workshops to robotics, all aimed at aiding the psychological well-being of the girls and providing them with skills and a sense of normalcy. The hub also offers a quiet space for escape from cramped living conditions and a cafeteria for socialization.

The impact of the hub is evident in Pazarcık’s container city, with an increasing number of girls becoming regulars. It has become a haven, contrasting the otherwise grim environment of the post-earthquake container city. Participants like Ayşe, Tilsim, Songül and İpek share stories of transformation and newfound hope through their engagement with the hub’s activities. Tilsim met with

a therapist at the hub and is working her way out of depression. Before discovering the hub, İpek would just sit in her container, staring at the walls for hours. She barely had a friend. Now, she has over 20 friends she can laugh and cry with. Ayşe joined the journalism workshop and produced a newspaper with her friends that was distributed all around the container city. Songül describes her experience at the hub as entering another world, leaving the gray dominating the rest of the container city and the aftermath of the earthquake behind. Today she dreams of becoming a journalist. When all feels lost, this small yet impactful hub gives a sense of normalcy and improves the well-being of participants.

Suna’nın Kızları’s approach has led to a noticeable decrease in school dropouts in the area. Encouraged by this success, they have established four more hubs in the region. The plan is to maintain these hubs as safe and empowering spaces for girls, continue employing locals to manage them, and ensure their sustainability. The partnership with Suna’nın Kızları is a significant part of the efforts to rebuild lives in Pazarcık and beyond.



# A TRUE SURVIVOR FROM HATAY

Aliye’s Journey of Hope at the Children’s Wellness Center

GRANTEE ORGANIZATION	ÇUKUROVA UNIVERSITY CHILD WELLNESS CENTER
Project Details	In collaboration with the Çukurova Üniversitesi Sanayi İşbirliği Vakfı, Turkish Pediatrics Institution (Türk Pediatri Kurumu), Çocuk Acil Tıp ve Yoğun Bakım Derneği ve T.C. Çukurova University, Child Wellness Center was established for medical, orthopedic, and socio-psychological support for 300 amputated children (ages ranging from 0-18) affected by the earthquake. Meetings and sessions are also held with immediate caregivers, such as mothers or close female relatives.
Project Objective	The center provides the children with the necessary treatment, prosthesis, and physiotherapy to help them become independent, productive individuals. Additionally, the center aims to increase awareness in society on the cause of children with disabilities. The center’s goal is to support children with disabilities to participate in social and working activities in general.
Grant Amount	\$576,220.65

Aliye, an 18-year-old girl from Hatay, is a true survivor with incredible strength and a will to live. She was caught in the earthquake, like millions in the region, in the middle of the night. She proved herself to be a miracle as she was pulled from the rubble after two days, giving all of us hope in the darkest moments. She made it out of the wreckage, which used to be her ‘home,’ but she had lost her mother and little brother. She also lost a part of her body—her leg. Despite the losses she encountered in one night, she did not lose the most important thing in life: the sparkle in her eyes.

Relocating to Adana with her father, who suffers from a serious heart condition, they found a new home with her aunt. In this new city, Aliye discovered the Children Wellness Center, a pioneering facility in Türkiye at Çukurova University dedicated to children with amputations.

This center offers vital treatments, prosthetics, and physiotherapy, empowering these young individuals towards independence and fulfillment. TPF played a key role in establishing this center, with its seed funding. Today, it has blossomed into a center that gives children who lost a limb a chance to excel in life.

Aliye’s commitment to recovery is evident; she never skips a session at the center, engaging in both physical and emotional rehabilitation. Known for her radiant smile and ever-present optimism, she moves through the center as a symbol of resilience, undeterred by the challenges of that fateful February 6th. Showing remarkable improvement, Aliye exemplifies the power of the human spirit and the importance of dreams and determination.

The center now serves 141 children from the region, providing comprehensive care and adapting prosthetics to the needs of their growing bodies. These children, like Aliye, are reclaiming their lives, finding wholeness in their recovery journey. The Children’s Wellness Center, with its mission to expand nationwide, aspires to be a sanctuary of healing for all children in need of special care in Türkiye. We take pride in our ongoing support for this transformative haven, aiming to extend its reach and impact.



# STRATEGY AND CRITERIA ON LONG-TERM FUNDING



TPF’s long-term funds from the earthquake fund will only support the organization by invitation with grants ranging from \$100,000 and \$1,000,000 to be made over a period of 2-5 years. With this new strategy, our aim is not only to rejuvenate and revitalize the cities impacted but to transform newly **established living spaces** into flourishing communities, encouraging residents to remain or return. To TPF, the rebuilding process encompasses two pivotal phases:

### Supporting Newly Established Living Spaces:

Our initial focus is on nurturing and sustaining the living spaces created post-earthquake, ensuring they are helpful to the well-being of their inhabitants.

**Revitalizing Cities Economically:** Subsequently, we aspire to see these living spaces transition into catalysts for urban revitalization and economic resurgence.

We aim to facilitate this transition by introducing innovative mechanisms and imparting skills necessary for self-sustenance and economic independence. The vision is to see these communities not just survive but thrive, becoming self-reliant entities that resonate with vibrancy and life. The specific outcomes we aim to achieve are:

**Ensure long-lasting sustainability and resilience within the region;**

**Drive and bolster regional economic progression and self-reliance;**

**Facilitate Community Connection and Communication;**

**Mitigate the lingering psychosocial ramifications incurred by the earthquake; and**

**Ensure that the achieved impact proportionally justifies the investment and resources allocated, maximizing the value delivered for every dollar spent.**

## Funding Criteria

Supported projects are evaluated based on the following criteria:

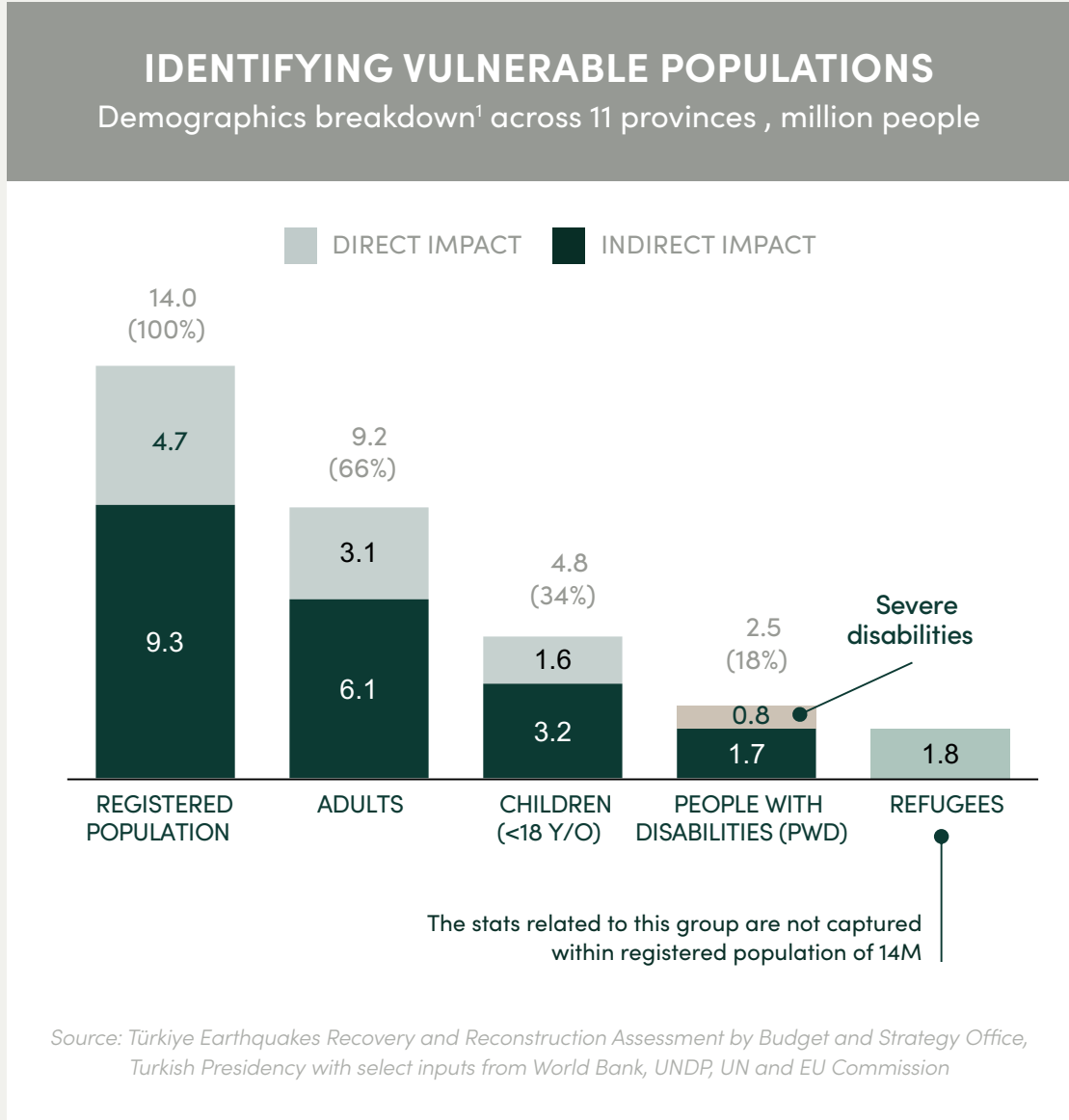
- **Sustainability:** The project should be designed to last at least two years and the organization should have strategies in place to sustain its operations and impact over the long term.
- **Economic Recovery:** The grantee should hire at least 50% of project staff locally and/or do most of the purchases from local businesses.
- **Capacity and Experience:** The grantee should demonstrate experience in disaster recovery from earlier disasters in the country, a clear understanding of the local context, and the capacity to manage and complete the proposed project.
- **Transparency and Accountability:** The grantee should have systems in place for financial tracking, monitoring, decision-making processes, and reporting to ensure funds are used responsibly and for the intended purpose. They should regularly publish audited financial statements or annual reports.
- **Conflict of interest:** The grantee should have in place a conflict of interest policy related to all parties involved.
- **Collaboration:** The grantee should demonstrate collaboration with other NGOs, local governments, or community groups to avoid duplication of efforts and maximize resources.
- **Effective Operations:** The grantee should have at least one paid staff member and strong, committed leadership at the board level.
- **Psychosocial Support:** The grantee should provide psychosocial support to all of its staff and volunteers implementing the program.
- **Safety Standards:** All buildings used for projects should adhere to safety standards that consider future seismic activity.
- **Monitoring and Evaluation:** The grantee should have robust monitoring and evaluation systems in place to measure its impact, learn from its interventions, and make necessary adjustments.
- **Resilience:** The grantee should have mechanisms in place to engage with stakeholders, adapt and respond to unforeseen challenges or changing circumstances.



# STRATEGY AND CRITERIA ON LONG-TERM FUNDING

## CONDUCTING NEEDS ASSESSMENT

We have joined forces with a team of experts from all of the world to execute an exhaustive evaluation of long-term needs. Our deepest appreciation goes to our Board Member, Aykut Atalı, as well as Selin Neşeliler and Yigit Yorulmaz for their stellar guidance and leadership in this endeavor. our heartfelt gratitude and special thanks to Irmak Anteplioğlu , Emir Cabukoğlu, Gözde Eskici, Çınar Fidan, Arda Güneyi, Nabil Ibrik,Ece Marcelli,Deniz Özel,Ahmed Sherwali, Oğuzcan Yenigun, and Huriye Yilmazyıldırım. Their contributions and efforts have been invaluable and we sincerely appreciate their dedication to our mission.



<sup>1</sup>People displaced based on UNICEF Humanitarian Situation Report No. 8

## DETERMINING MOST PRESSING NEEDS

To inform the strategy, we leveraged a comprehensive process to identify and prioritize unmet needs.








### WE USED A 4-LAYERED LENS TO NARROW CHALLENGES TO 19 UNMET NEED AREAS

CHALLENGES				UNMET NEEDS
	Priority TPF areas	Activity levels	NGO scope	Long term duration
	Emerged across 7 priority areas from TPF	Not fully covered by the existing activity	In scope for NGOs (e.g., less public institution domain)	Unlikely to bounce back in long term
				Unmet need areas
				19 unmet needs across 7 priority areas

### WE, THEN FOLLOWED THE BELOW METHODOLOGY



WE IDENTIFIED 19 UNMET NEEDS  
ACROSS TPF’S FOCUS AREAS

FOCUS AREAS	DEFINITION	AREAS OF UNMET NEEDS AND POTENTIAL INITIATIVES	POPULATION AFFECTED, MILLIONS
<div>1</div> <div></div> <div>EDUCATION</div>	Interruption of educational activities resulting from the impairment of school facilities, relocation of students, and emotional distress	<div>A</div> <b>Access to education</b> – Address low school attendance rates, including offering scholarships for students, providing transport services and incentivizing attendance (e.g., food program)	<div>0.8</div> DISPLACED CHILDREN <div>4.8</div> <div>4</div>
<div>2</div> <div></div> <div>PSYCHO-SOCIAL SUPPORT</div>	Increased mental health issues among people experiencing the earthquake	<div>A</div> <b>Access to care</b> – Develop targeted outreach to increase care for underserved populations, train social workers about existing programs; support the mental health of frontline workers	<div>3</div> <div>Population is expected to be affected with differing severity</div>
<div>3</div> <div></div> <div>CREATING SAFE SPACES FOR CHILDREN</div>	Increased risks of exploitation, abuse, and neglect due to displacement, disrupted family structures, and inadequate protection measures	<div>A</div> <b>Urgent child protection</b> – Facilitate access to child protection services for older and younger children	<div>0.8</div> DISPLACED CHILDREN <div>4.8</div> <div>4</div>
<div>4</div> <div></div> <div>PEOPLE WITH DISABILITIES</div>	Increased social isolation, limited access to necessary resources due to accessibility issues	<div>A</div> <b>Accessibility</b> – Improve physical / language (e.g., Braille) accessibility of public spaces	<div>0.1</div> RECENTLY DISABLED <div>0.9</div> <div>0.8</div> EXISTING SEVERE DISABILITIES
<div>5</div> <div></div> <div>ECONOMIC DEVELOPMENT</div>	Damage to infrastructure and loss of livelihoods, leading to reduced economic activity	<div>A</div> <b>Employment and upskilling</b> – Offer trainings for adults and children to enhance critical job skills	<div>14</div> <div>The whole population is expected to be affected with differing severity</div>
<div>6</div> <div></div> <div>CULTURAL HERITAGE</div>	Damage or destruction of cultural assets, leading to a loss of cultural identity and decreased tourism	<div>A</div> <b>Monuments and artifacts</b> – Increase awareness of region’s cultural heritage; support museums in expanding audiences through virtual and off-site exhibits; earmark funding for research	<div>N/A<sup>1</sup></div>
<div>7</div> <div></div> <div>OTHER VULNERABLE GROUPS</div>	Increased vulnerability, unequal access to resources, and reduced participation in decision-making processes, leading to further marginalization and discrimination	<div>A</div> <b>Access to shelter, healthcare, and nutrition</b> – Provide long-term housing; advocate for civil rights protections	<div>1.8</div> REFUGEES <div>8.8</div> <div>7</div> WOMEN

Turkish Philanthropy Funds (TPF) is steadfast in its commitment to contributing to the **long-term resilience and holistic well-being** of communities affected by earthquakes. Over the last few months we have undertaken an in-depth exploration of our areas of focus and have fine-tuned our priorities into four key sectors with an emphasis on women, children, and youth:

Psycho-Social Support

To foster resilience, empowering individuals and communities to recover and rebuild in the aftermath of disaster.

Economic Development

To stimulate economic growth while reinforcing communal identity and resilience.

Education

Traditional and Life-Skills to equip younger generations with the knowledge, skills, and attitudes necessary for thriving in the 21st century and contributing to their community’s resilience and development.

Children with Disabilities

To ensure children who lost their limbs receive tailored medical treatments and inclusive rehabilitation programs, bolstering their journey towards self-sufficiency, mobility, and empowerment that will outlast the effects of the earthquakes.





# OUR IMPACT ON COMPLETED GRANTS

## SEARCH AND RESCUE OPERATIONS

- Support provided for technological infrastructure and map-based system
- Operations coordinated and affected residents identified
- 2 coordinators hired for 3 months to manage front-line workers, emergency medical supplies, relief supplies such as tents, dignity kits, power banks, and survival kits for displaced families



**Benefiting 37,215 people**

**Total Grant Amount: \$200,000**

**In partnership with: Community Volunteers Foundation (TOG), Needs Map**

## FOOD SECURITY AND NUTRITION

- Emergency food aid is provided through AFET Platformu warehouses, trucks, mobile kitchens, and catering companies
- Canned foods, hot meals, and gluten-free food boxes for celiac patients distributed
- Assistance provided to major cities and villages in the region and food boxes sent to mobile kitchens and tent cities
- 42 trucks distributed food to cities and villages
- 1001 celiac patients/children were provided food boxes



**Benefiting 166,897 people**

**Total Grant Amount: \$830,264**

**In partnership with: Unvansiz Gonulluler Association, Food Rescue Association (FRA), Needs Map, COLYAK Manisa, World Human Relief, Basic Needs Association (TIDER), Hope Foundation for Children with Cancer (KACUV)**

## EMERGENCY AND SHELTER

- Generator provided to keep Gaziantep residents warm during cold weather
- Tents were sent to farmers with animals and agricultural land who could not leave the region
- The family members of 50 cancer patients accompanying them during their treatment were provided with accommodation support



**Benefiting 13,820 people**

**Total Grant Amount: \$145,233**

**In partnership with: Needs Map, Turkish Cancer Association and Unvansiz Gonulluler Association**

## WASH

- People in affected cities were provided with essential items: mobile toilets, non-perishable hygiene kits, warm clothes, blankets, baby boxes, shower places, laundromats, camp stoves and thermal tents
- Long term drinking water was provided in the region
- 18 elderly and disabled-friendly toilets and bathrooms produced and delivered
- 300 Maternity kits to pregnant and postpartum women, 300 dignity kits to girls and 100 school sets were distributed
- 3,000 women and girls were supported against increasing risk of reproductive health related issues and gender based violence in addition to psychosocial support
- 1 barber/coiffeur built to serve anyone impacted by earthquakes and provide employment opportunities



**Benefiting 1,136,099 people**

**Total Grant Amount: \$762,077**

**In partnership with: AKUT Foundation, Support to Life, KAMER Foundation, World Human Relief, Needs Map, Turkish Family Health and Planning Foundation (TAPV), 65+ Elderly Rights Association, Community Volunteers Foundation (TOG)**

## PSYCHOSOCIAL & MENTAL HEALTH

- Health screening is offered to survivors to identify mental health needs
- Individual and group counseling services provided
- Online psychological support and tools available through newly constructed containers
- Art therapies are provided to aid in recovery for both children and adults
- Caravan provided for treatment of individuals with chronic psychiatric conditions and mobile healthcare, including acute treatment
- 3,000 women and girls were supported by psychosocial activities



**Benefiting 29,958 people**

**More than 700 psychiatrists volunteered**

**Total Grant Amount: \$504,021**

**In partnership with: Maya Foundation, Turkish Psychological Association, Nirengi Association, Türkiye Education Volunteers Foundation (TEGV), the Psychiatric Association of Türkiye (PAT), Turkish Family Health and Planning Foundation (TAPV)**

## ECONOMIC DEVELOPMENT

- 300 rural producers were assisted (women, refugees, young people) – 50% women
- Businesses included cooperatives, social enterprises, LLCs
- Across 11 cities
- Support helped producers convert inventory to cash
- Connected with potential buyers and secured presales



**Benefiting 1,200 individuals**

**Total Grant Amount: \$71,000**

**In Partnership with: Innovation for Development (I4D)**



## SAFE SPACES FOR CHILDREN

- Art, music, and drama workshops held
- Children's Community Centers and Purple Women and Children Safe spaces established in container cities
- Special needs of girls, children, and women addressed, including nursing and prime healthcare spaces
- Services provided include well-being conversations, individual psychosocial support by adolescent and child therapists, and socializing events such as movie screenings, reading hours, creative writing, and sports
- Early childhood development play boxes were distributed to children and their families to help children feel secure in their new homes and stimulate early learning
- A Basket Village was established offering shelter, hygiene facilities, and basketball courts, aimed at helping kids cope with the disruptions caused by the disaster and facilitating socialization with their peers

**Benefiting 6532 individuals**

**Total Grant Amount: \$465,569.75**

**In partnership with: Suna'nin Kizlari, the Mother Child Education Foundation (ACEV), Buradayiz Hatay, Federation of Women Association of Türkiye (TKDF), Basketball Solidarity and Education Foundation (BIDEV)**



## EDUCATIONAL SUPPORT

- New school construction with 12 classrooms supported
- Students received scholarships, cash assistance, and transportation
- Medical school students received computer support
- Orphaned university students received cash or transportation support
- Mobile Education Trucks and Activity Centers served as distribution centers for hygiene and nutrition products as well as the hubs for psycho-social activities for children
- Students studying/living in the affected regions were provided scholarships and cash support
- High school students imported to schools in other cities were provided monthly support to cover their needs of transportation, food and books
- One pre-school was built in the region to support early education of children
- Teachers in the affected regions were provided psychosocial support in addition to educational materials, emergency kits and powerbanks

**Benefiting 87,354 individuals**

**Total Grant Amount: \$1,236,732.38**

**In Partnership with: AHBAP, CYDD, PAYDA, KAHEV, TOCEV, TEGV, Lokman Hekim Health Foundation, TEV, Askida Ne Var?, Bornova Anatolian High School Foundation (BALEV), Cocuklar Gulsun Diye Association, Teachers Academy Foundation (ORAV), Robert College**





## HEALTH SERVICES

- 96 SMA patients and families living in containers and tents received hygiene and food kits twice a month
- Generator support was provided for those whose medical devices were not working due to a lack of electricity
- A mobile vehicle helped more than 6K children with leukemia, their families and adult cancer patients in the region by offering social support services, psychological support and medical examination to complete their registration process at LOSANTE Children's and Adult Hospital
- The cancer treatment plans of 100 patients who had to relocate were supported. Family members were given accommodation support.
- Women and girls were given education about reproductive health, gender based violence, psychosocial support, PSS and were given dignity kits
- Children with autism in the region were given educational materials, toys and some technological devices (tablets, headphones) to continue their education and to reduce their sensitivities



**Benefiting 26,641 individuals**

**Total Grant Amount: \$276,247.30**

**In Partnership with: Türkiye SMA Foundation, LOSEV, Turkish Cancer Association, Turkish Family Health and Planning Foundation (TAPV)**

## HUMANITARIAN CASH SUPPORT

- 330 displaced people, asylum seekers, and refugees in earthquake regions received the aid of two months' rent support, and shopping cards were provided from chain supermarkets
- 200 musicians who lost their income without their instruments, venue, and sound systems were also supported
- The musicians gave a concert for the people of Antakya to bring joy and hope during difficult times
- 100 cancer patients were transferred to different cities for their treatment. The family members of 50 patients were provided accommodation support. 80 financially disadvantaged patients received one-time \$200 cash support.



**Benefiting 5,270 individuals**

**Total Grant Amount: \$191,405**

**In Partnership with: ARSA, Antakya Civilization Choir Foundation, Turkish Cancer Association**



# YOUR SUPPORT MAKES A DIFFERENCE

**100% OF YOUR DONATIONS**  
TO OUR TÜRKİYE EARTHQUAKE FUND IS DEDICATED ENTIRELY TO  
PROGRAMS AIDING THE EARTHQUAKE-AFFECTED REGION.

**PLEASE CONSIDER TO CONTINUE SUPPORTING OUR EFFORTS.** As we continue our efforts in the rebuilding of the earthquake region at TPF, we would love to give our donors a deeper insight into the community's unique needs and our tailored strategies to address them. Would you like to be part of the rebuilding phase and continue to be involved in our efforts? Contact our Director of Philanthropy, Pınar Özyürek at [pinar@tpfund.org](mailto:pinar@tpfund.org) for a meeting with Team TPF.



## Help us Get the Word out on Social Media

Please continue supporting TPF by spreading the word on social media. Sharing our mission and impact with your network can help us reach new supporters and make an even greater difference.



## Have Your Gift Matched

With TPF recognized on all major corporate giving platforms, you have the opportunity to amplify your impact through employee giving programs. Your contribution to our Earthquake Fund can potentially be doubled by your employer, providing even more support to those in need. Leverage your corporate benefits to help rebuild lives with TPF!

If your company doesn't have a program in place, you can contact TPF to explore setting one up together. Let your employer know of your interest in supporting this important cause, and they may be willing to work with you to make a meaningful impact.

## Direct Corporate and Foundation Gifts

TPF, recognized for our transparency and effectiveness, is the trusted partner of hundreds of corporations and foundations. Suggest the foundation arm of your corporation or your CSR department a partnership with TPF. Just one email to [info@tpfund.org](mailto:info@tpfund.org) could start a collaboration that changes countless lives.

## Join the Movement with a Donor Advised Fund

TPF currently manages close to 50 DAFs, demonstrating our commitment to not only receiving but also responsibly stewarding and directing charitable contributions towards impactful causes. With TPF, you have the opportunity to establish a DAF and engage in strategic personal philanthropy to make a lasting impact in your community and beyond. Please reach out to TPF Director of Philanthropy, Pınar Özyürek at [pinar@tpfund.org](mailto:pinar@tpfund.org) to learn more about this empowering way to give.

If you have a DAF at another institution, you still can direct your DAF contributions to a cause under TPF.

## Become a force for enduring change with Giving Circles!

With recovery efforts expected to span 3-5 years, now is the time to engage in a deeper, more sustained form of philanthropy. By starting a Giving Circle with TPF, you and your network can pool resources, wisdom, and passion to spearhead long-term initiatives that communities truly need. When you unite with others you multiply your impact!





# A heartfelt thanks to all our donors

Thank you to all those who have generously supported our earthquake fund. With your support, we have provided much-needed assistance such as food, water, medical care, and emergency shelter to the affected communities. Your kindness and humanitarianism have made a meaningful difference in the lives of those impacted by the earthquakes, and for that, we are deeply grateful.

Our commitment to helping the affected communities rebuild and recover remains steadfast, and we are honored to have you as our partners in this crucial mission. We simply could not do it without you. Thank you for standing with us in our efforts to make a difference.